

William Shearburn Gallery



Likeness



Likeness

March 10 - April 14, 2017

Milton Avery
Chuck Close
Richard Diebenkorn
Lucian Freud
Chantal Joffe
Alex Katz
KAWS
Elaine de Kooning
Roy Lichtenstein
Tim Liddy

Robert Longo
Henri Matisse
Sterling Ruby
Cindy Sherman
Paul Anthony Smith
John Sonsini
Jim Torok
Andy Warhol
Cayce Zavaglia

William Shearburn Gallery

Likeness features works by Milton Avery, Chuck Close, Richard Diebenkorn, Lucien Freud, Chantal Joffe, Alex Katz, KAWS, Elaine de Kooning, Roy Lichtenstein, Tim Liddy, Robert Longo, Henri Matisse, Sterling Ruby, Cindy Sherman, Paul Anthony Smith, John Sonsini, Jim Torok, Andy Warhol and Cayce Zavaglia. Though these works encompass an array of formal approaches in painting, drawing and printmaking, they share in that they can each, with varying degrees of literality, be seen as a portrait.

A central aspiration of portraiture is to capture a subject's essence: its intrinsic nature or indispensable quality, its *je ne sais quois*. The language of this endeavor—to capture an essence—immediately evokes a charged power dynamic between artist, subject and, indeed, viewer. There is an aspect of taking over, being absorbed, then re-embodied. Portraiture has its roots in the overtly political, originally reserved as a tool to immortalize the wealthy political elite. The politics of portraiture today are far more variegated, drawing lines between the deeply personal, mass-produced, gestural and appropriated. From Velasquez and Rembrandt to Katz and Warhol, the history of portraiture is rich with reinterpretations and reactions to or against, as artists have migrated between abstraction and representation, spirituality and cynicism. A portrait might embody and relay a certain narrative about the sitter or the relationship between artist and sitter. A portrait might be darkly psychological, as with Freud's fraught figures; expressively off-kilter, as with Chantal Joffe's disproportionate, listless subjects, or it might flatten and modularize a figure into something readily consumable, as with Lichtenstein. Whatever the approach, this diverse group of artists undertakes an expansive survey of what a portrait can be.

Milton Avery

Untitled (Reclining Figure), 1959

Watercolor

10 1/2 x 29 1/2 inches



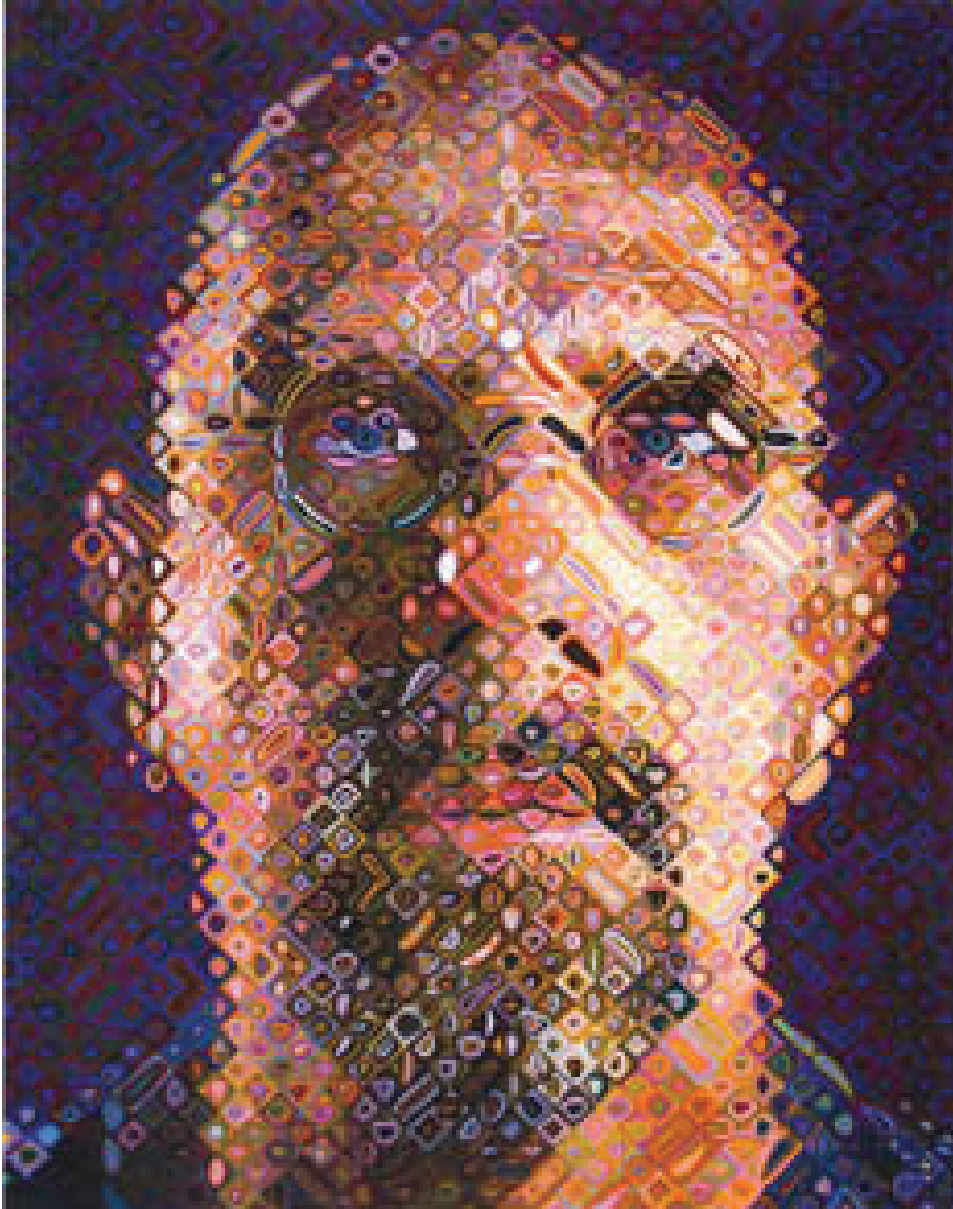
Chuck Close

Self-Portrait, 2007

Screenprint in 187 colors

74 1/2 x 57 3/4 inches

Edition of 80



Richard Diebenkorn

Untitled, 1967

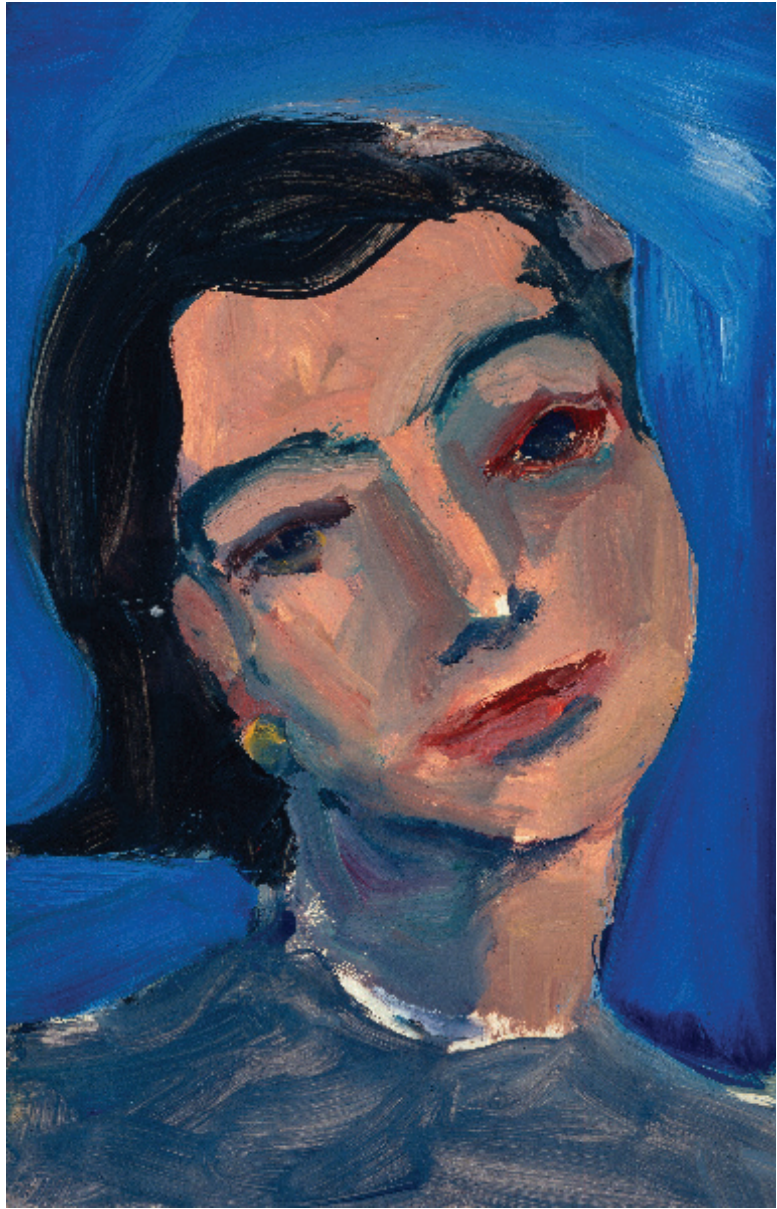
Gouache and graphite on paper

18 3/8 x 14 1/2 inches



Richard Diebenkorn

Untitled, RD, 3609, nd
Gouache and oil on paper
17 x 11 inches



Lucian Freud

Head of Ali, 1999

Etching on Somerset paper

29 7/8 x 22 7/8 inches

27/46



Chantal Joffe

Esmé in the Luxembourg Gardens I, 2016

Oil on board

16 x 12 inches



Chantal Joffe

The Conversation II, 2016

Oil on canvas

22 x 16 inches



Alex Katz

Ada at Tortola, 1975

Oil on masonite

12 x 9 inches



KAWS

Untitled, 2015
Acrylic on canvas
40 inches in diameter



Elaine de Kooning

Self Portrait, 1965
Acrylic on canvas
28 x 22 inches



Roy Lichtenstein

Untitled (Brushstroke Head), 1986
Painted and printed paper on board
45 5/8 x 27 1/2 inches



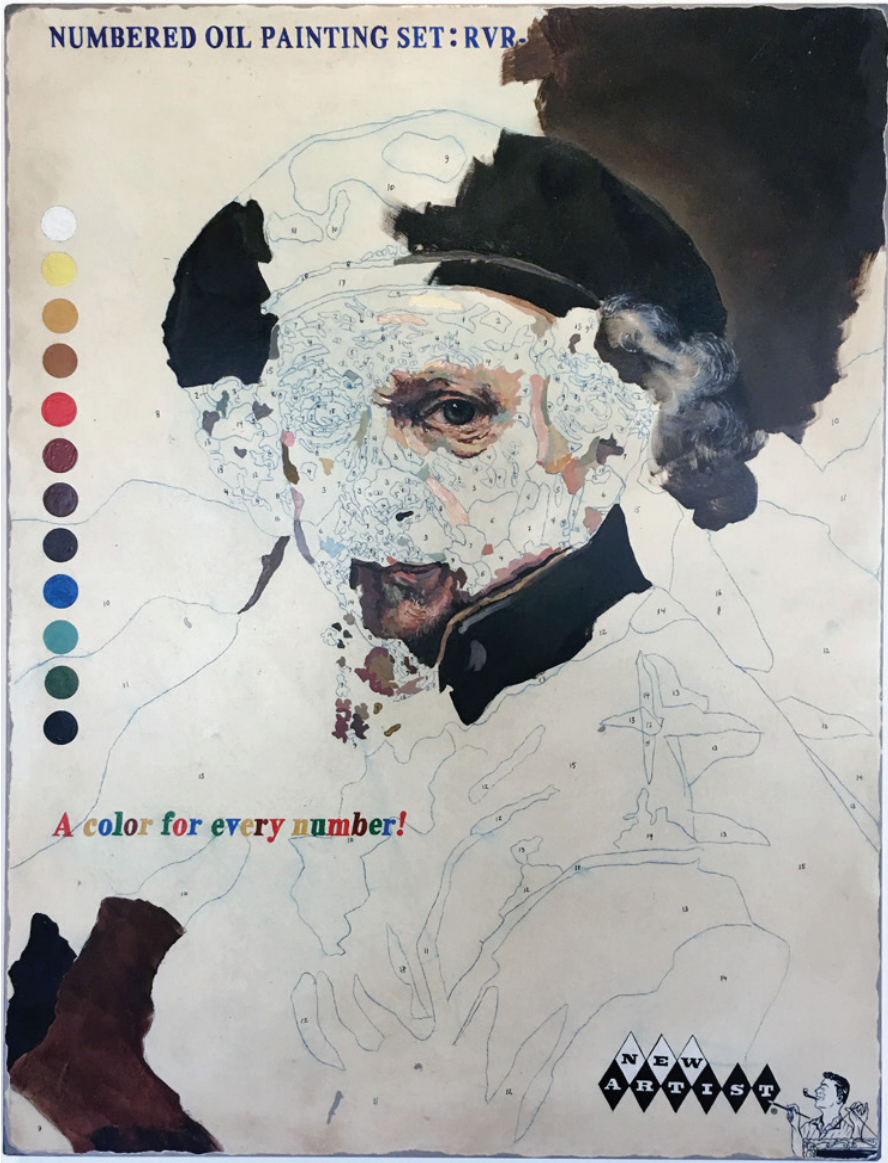
Tim Liddy

A Number for Every Color, 2017

Oil and enamel on copper

19 x 25 x 1 1/2 inches

NUMBERED OIL PAINTING SET: RVR.



A color for every number!

NEW
ARTIST

Robert Longo

Study for Tiger, 2013

Ink and charcoal on vellum

21 x 15 3/8 inches

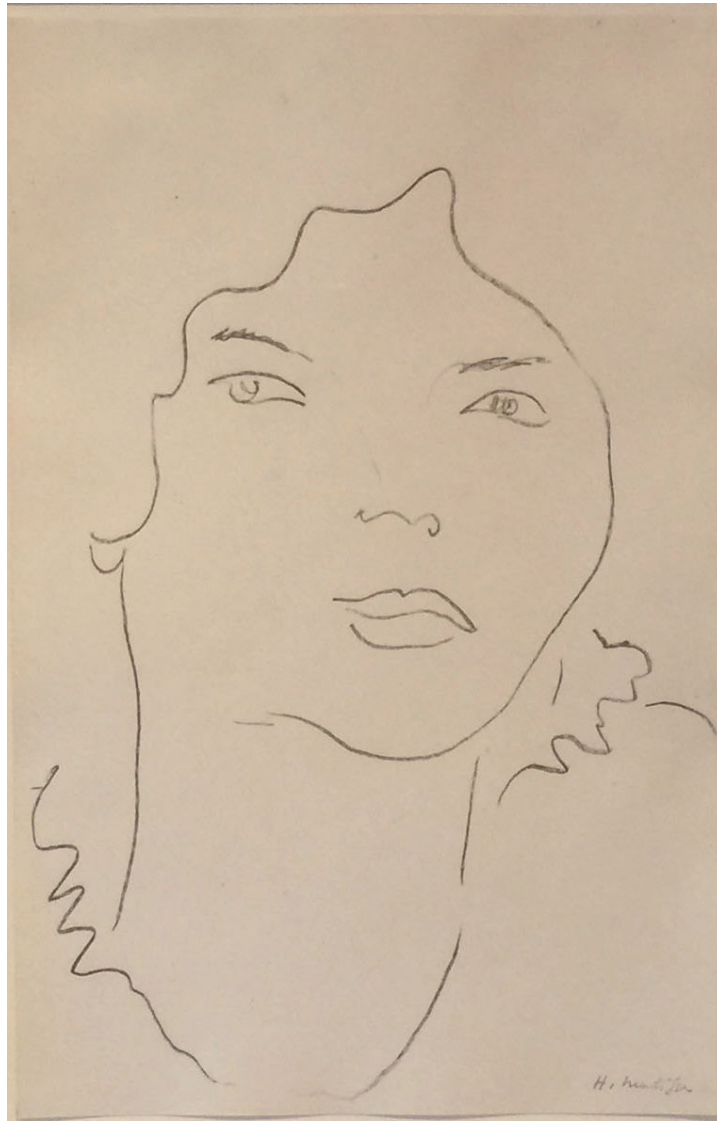


Henri Matisse

Portrait of Emma, 1916

Pencil on paper

17 1/4 x 11 1/8 inches



H. M. 1910

Henri Matisse
Tête de Cote, 1936
Ink on paper
15 x 11 inches



Sterling Ruby

Vampire 115, 2013
Fabric and fiber fill
84 x 45 x 4 inches



Cindy Sherman

Untitled #77, 1980

Color photograph

20 x 24 inches

1/5



Paul Anthony Smith

44.2258° N, 76.5967° W #5, 2014

Oil and spray paint on canvas

44 x 34 inches



John Sonsini

Fernando, 2007
Oil on canvas
20 x 16 inches



Jim Torok

Kate, 2016
Oil on panel
5 x 3 3/4 inches



Jim Torok

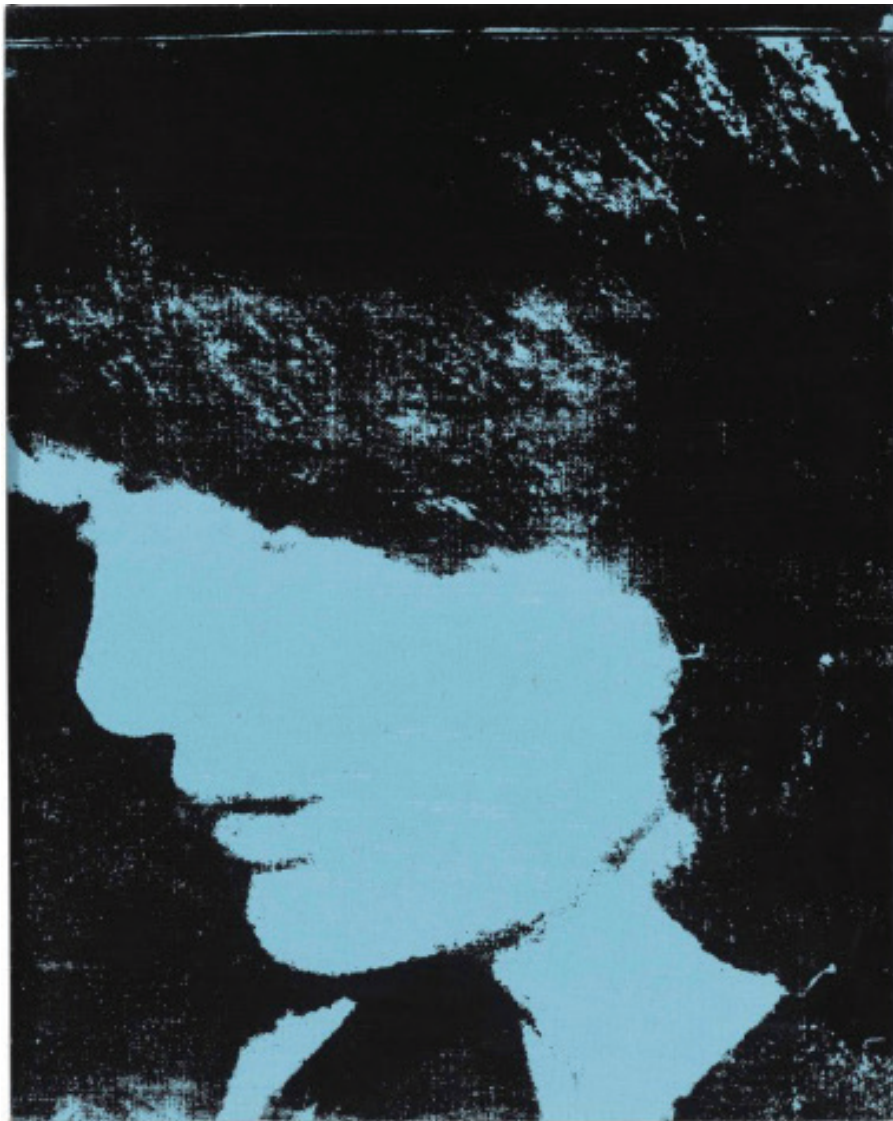
Mimi, 2014
Oil on panel
5 x 3 3/4 inches



Andy Warhol

Jackie, 1964

Synthetic polymer and silkscreen ink on canvas
20 x 16 inches



Cayce Zavaglia

Luca Verso, 2016

Hand embroidery: Wool, cotton and silk thread on raw Belgian linen
46 1/2 x 47 1/2 inches



William Shearburn Gallery
665 S. Skinker Blvd
St. Louis, MO 63105
314.367.8020

info@shearburngallery.com
www.shearburngallery.com



William Shearburn *Gallery*